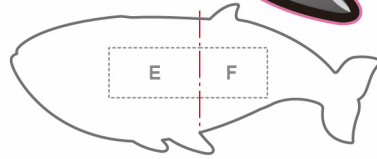
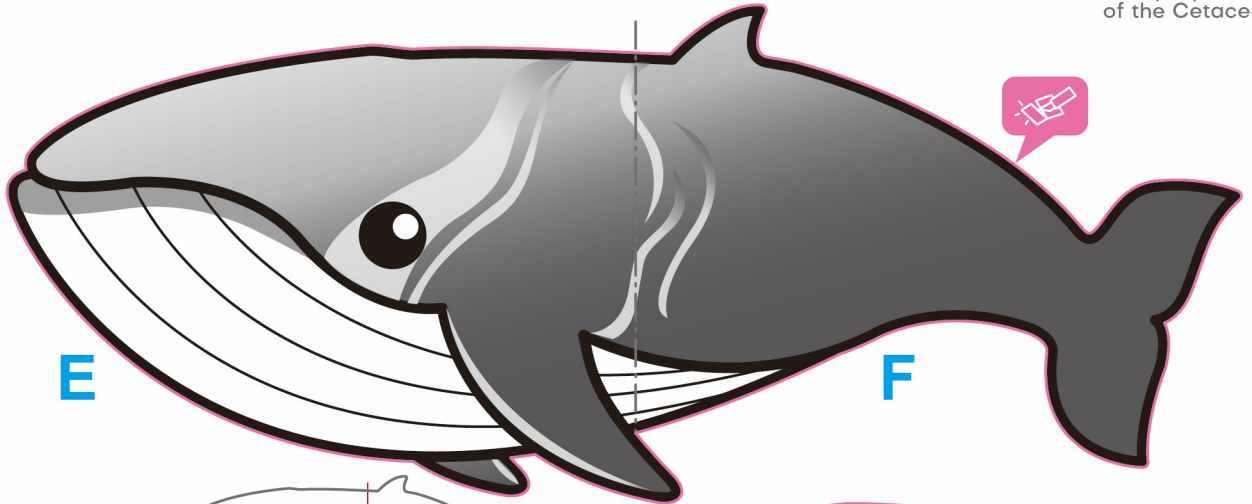


OMURA'S WHALES 3D card

cephalopod diy pop-up card



Pop-up book of the Cetaceans



E,F is attached to the back, with a position diagram.

Steps:

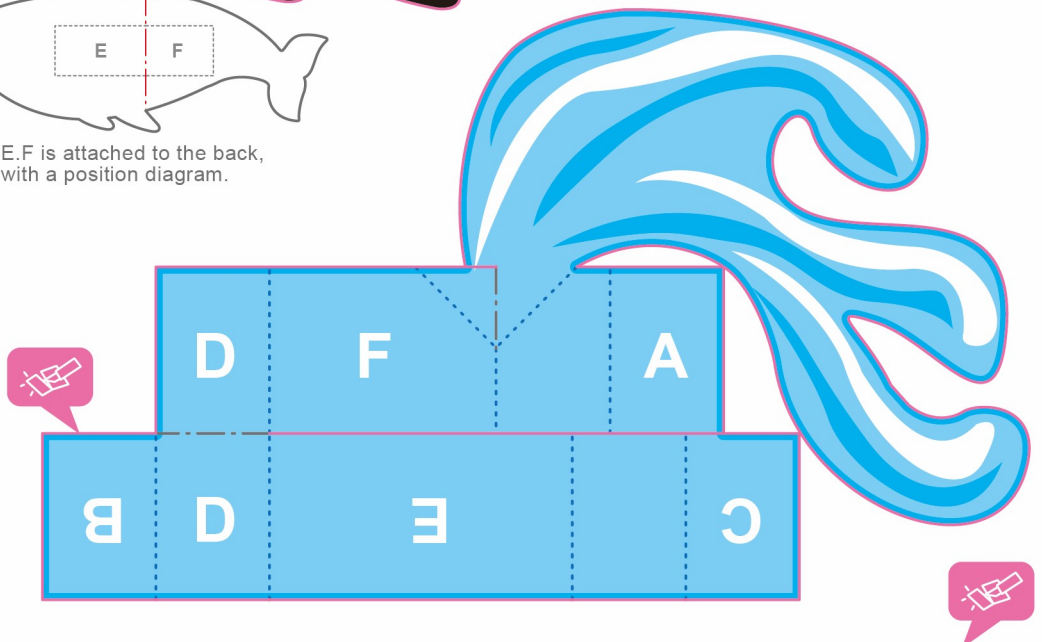
1. Cut the components following the cutting line.
2. Fold according to the marks.
(Use a stylus or a used ballpoint pen to draw the folding lines before folding.)
3. Paste the points with the same alphabets together (e.g., A to A, B to B).

Mark descriptions:

Cutting line 

Mountain fold 

Valley fold 



Omura's whales

Omura's whales are mammals and classified as baleen whales, with a body length of about 10-12 meters and two blowholes. We can see them in the warm waters of the Pacific and Indian Oceans. They use baleen plates to filter and eat.

C

B

A

